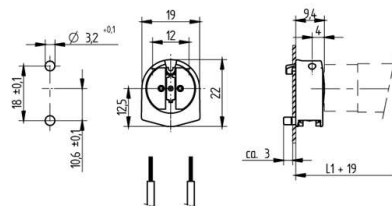


 Create pdf

Lampholders and starter holders

26.641.2003

G5 End fixing lampholders



L1+19: Recommended dimension - The distance between the cut-outs and the tolerance should be governed by the dimensions of the respective lamps and luminaires.

colour	pkg.	wt.	part no.
white	1000	3 g	26.641.2003.50

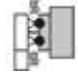

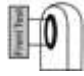


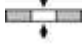

Approval: additional cULus (120W / 600V)

Wiring: through the body

Snap in pins vertical

Housing: PC

Rotor: PBT

T 130	Tm 110					 18 AWG 0.5 - 1.0 mm ²	 0.6 - 1.0	
-------	--------	---	---	---	--	--	--	---

Document generated on: Mo, 6. February 2017 - 11:48